



**Alcatel Speed Touch
ADSL PC Network Interface Card
User Guide**

**Microsoft Windows
95A, 95B, 98, 98SE, Me, NT 4.0, 2000 and XP**

Table of Contents

Congratulations!	1
Step 1 – Know Your PC’s Operating System	1
Step 2 – Determine Your Connection Settings	2
Step 3 – Install the ADSL Modem Card	3
Step 4 – Install the Drivers and Make a Connection	5
Windows 95A.....	6
Windows 95B.....	9
Windows 98, 98SE.....	12
Windows Millennium.....	14
Windows NT4.0 - RFC1483 or RFC1577.....	21
Windows NT4.0 - RFC2364	23
Windows 2000	29
Windows XP	36
<u>Appendix</u>	
Standard Utility	44
Un-Installer	45
Diagnostic Tools	46
XP Utility (for Windows XP only).....	49
Un-Installer	50
Diagnostic Tools	51
Connection Guide.....	54
Common Problems and Solutions	56
Connector & Jumper-pin Configuration Guide.....	58
System Requirements & Compliance Information.....	59
Copyright & Regulatory Information.....	59
Safety Instructions.....	59
FCC Statement	60
User License Agreement	61

Congratulations!

You are about to accelerate into ADSL technology. Your new ADSL modem card is an internal Asymmetric Digital Subscriber Line (ADSL) PCI modem card, which conveniently plugs into your computer system. The modem connects directly to your telephone line via a standard connector.

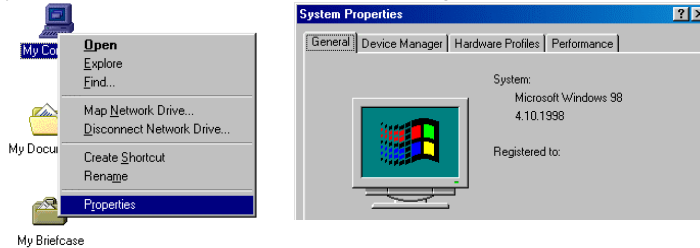


This guide is designed to walk you through installation of your ADSL Modem card in the easiest and quickest way possible. Please follow the instructions carefully.

Step 1 – Know Your PC's Operating System

You will need to know the exact version of Microsoft Windows installed in your computer. If you do not know or are unsure, please proceed as follows to determine your version of the Microsoft Operating System.

On your desktop, **right-click** on **My Computer**, and select **Properties**. The version number of the Microsoft Windows Operating System installed in your computer will be displayed on the **General** tab. Refer to the following table for more detailed information.



Windows OS	System Properties Description	Release (Microsoft Web)
Win 95A	4.00.950A	Windows 95 OSR1
Win 95B	4.00.950B	Windows 95 OSR2
Win 98	4.10.1998	Window 98
Win 98SE	4.10.2222A	Windows 98 2nd Edition
Win Me	4.90.3000	Windows Millennium
Win NT	4.00.1381	Windows NT 4.0
Win 2000	5.00.2195	Windows 2000
Win XP	Version 2002	Windows XP

If you have questions regarding your PC system and the Microsoft Windows Operating System, please contact your original PC manufacturer or Microsoft for assistance.

Before installing the ADSL PCI Modem Card, it is important to verify that the ADSL data port RJ-11 jack is configured so that the center two pins, pins 3 and 4, are used for ADSL data. If the ADSL data port installation uses pins 2 and 5 for data, consult the Connector & Jumper-pin Configuration Guide located in the Appendix.

Step 2 – Determine Your Connection Settings

You need to know your PC system's **Windows OS** and **Internet Protocol** supplied by your ADSL service provider. Refer to the following chart for your ADSL Driver.

Protocol Selection			
EoA (RFC1483)	⇒	Bridged Ethernet over ATM	
IPoA (RFC1577)	⇒	Classical Internet Protocol over ATM	
PPPoA (RFC2364)	⇒	Point-to-Point Protocol over ATM	

ADSL Driver Selection	RFC1483	RFC1577	RFC2364
Win 95A & 95B	1483w95	1577w95	2364w95
Win 98 & 98SE	1483w98	1577w98	2364w98
Win Millennium	1483wMe	1577wMe	2364wMe
Win NT 4.0	1483wNT	1577wNT	2364wNT
Win 2000	1483w2K	1577w2K	2364w2K
Win XP	1483wXP	1577wXP	2364wXP

Having determined the ADSL Driver you will be installing, you now need to gather the connection information supplied by your ADSL service provider.

VPI value: _____

VCI value: _____

Framing: VC MUX LLC/SNAP

Mode: ANSI T1.413 ITU G.lite ITU G.dmt

For RFC1483 or RFC1577

Host:

Domain:

Gateway:

IP Address:

Subnet Mask:

DNS or server address:

For RFC2364

User Name:

Password:

Host or IP Address:

Step 3 – Install the ADSL Modem Card

Caution: To avoid possible damage to your modem card, touch the metal chassis of your PC system to remove any static charge that may exist from your fingers, and then remove your ADSL modem card from the protective anti-static bag.

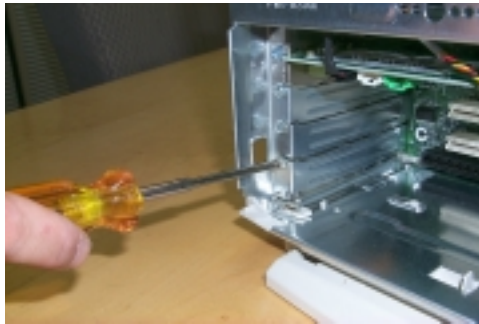
1. Shut down your computer and **switch the power off.**
2. **Unplug the power cord** for your computer from the electrical outlet.



3. **Remove the cover** from your systems chassis (see your PC manufacturer's manual).



4. **Unscrew “metal slot cover bracket”** from an unused PC motherboard PCI connector (a PCI connector is usually white in color).



5. Gently and evenly **insert the PCI modem card** into your empty PCI slot.



6. Make sure the card is firmly seated, and then **secure the card with the bracket screw**.



7. **Replace the cover** of your computer system and **connect the ADSL/phone line** to the connector port on the modem card. Then plug the other end of the cable into your ADSL -phone service.



Step 4 – Install the Drivers and Make a Connection

You will be installing driver A3v2.2.8.0071-3ACTL and then proceeding to make an Internet connection. This process requires you to enter information as prompted by the Microsoft Installation Wizard.

NOTE: You may need the Microsoft Windows Operating System installation files (CAB files) to complete the installation. The CAB files are contained in the Microsoft's system CD-ROM. Some systems may have already installed the CAB files to the hard drive, but you should have the Microsoft Windows CD-ROM for your Operating System handy just in case.

Proceed now to the installation procedure for the Windows Operating System installed in your computer.

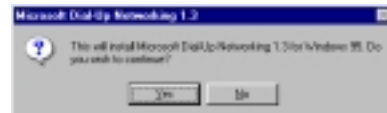
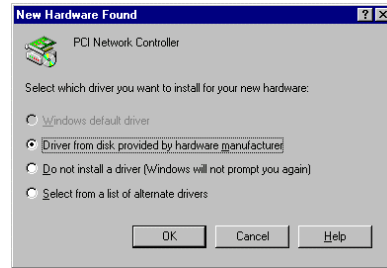
Windows 95A	6
Windows 95B	9
Windows 98, 98SE	12
Windows Millennium	14
Windows NT – RFC1483 and RFC1577	21
Windows NT – RFC2364	23
Windows 2000	29
Windows XP	36

Windows 95A

NOTE: After installing the ADSL modem card, plug the power cable back into the PC system and turn the power on.

Before you proceed to install drivers, you may need to upgrade your Dial-Up Networking (DUN) application to version 1.3 or above. The Microsoft DUN is conveniently contained on your ADSL Driver CD-ROM.

1. After restart, the **New Hardware Found** window will detect the ADSL modem as a **PCI Network Controller**. At this time, **CANCEL** the **New hardware found** window.
2. From the **Start** menu on the toolbar, select **Run**.
3. The **Run** window appears. Click on **Browse** and locate the drive that contains your ADSL driver CD-ROM. Then locate and select the **MSDUN13.EXE** file. The **MSDUN13.EXE** appears in the **Open** box. Click **OK**.
4. The **Microsoft Dial-Up Networking 1.3** window appears with the message **This will install Microsoft Dial-Up Networking 1.3 for Windows 95. Do you wish to continue?** Click **Yes**.
5. An **End-User License Agreement** will appear. To accept, click **Yes**.
6. Again in the Microsoft Dial-Up Networking 1.3 window, you will be asked: **Do you want to restart your computer now?** Click **Yes**.



NOTE: You may need the Microsoft Windows Operating System installation files (CAB files) to complete the installation. The CAB files are contained in the Microsoft's system CD-ROM. Some systems may have already installed the CAB files to the hard drive, but you should have the Windows 95 CD-ROM handy just in case.

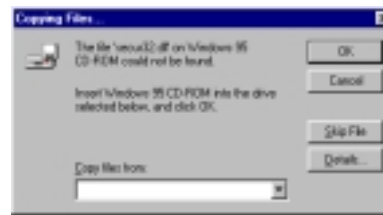
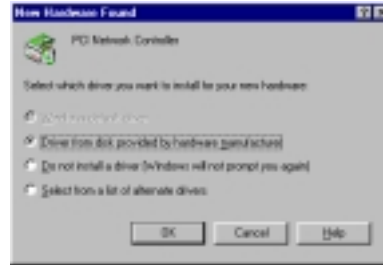
- The **New Hardware Found** window will again detect the ADSL modem card as a **PCI Network Controller**. This time, select the **Driver from disk provided by hardware manufacturer** option. Click **OK**.

Insert the ADSL Driver CD-ROM into your system's CD drive now.

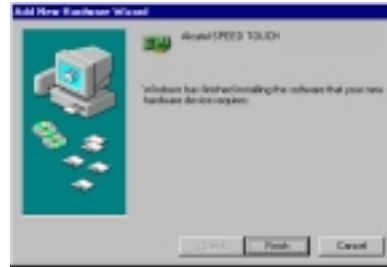
- The **Install From Disk** window appears. Click **Browse** to locate the driver on your CD-ROM for the protocol supported by your ADSL provider: **1483w95**, **1577w95** or **2364w95**. (The example uses "D" as the CD-ROM drive letter. Your drive letter may differ.) Then click **OK**.

NOTE: During the installation process you may be asked to insert your **Windows 95** CD. Insert the **Windows 95** CD into the CD drive and click **OK**.

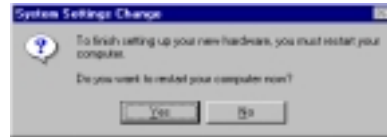
NOTE: If during the file copying process a file is reported as **not found**, then enter the path with the CD Drive letter and **:\Win95** (Ex: D:\Win95).



- At the conclusion of the ADSL modem driver installation, the **Add New Hardware Wizard** window appears and displays your newly installed **Alcatel Speed Touch** software. Click **Finish**.



- The **System Settings Change** window appears. For the PC system to set up the **Alcatel Speed Touch**, a system **Restart** is required. Click **Yes**.



NOTE: After restarting the system, the Diagnostic Tool icon (See Appendix) is active and monitoring connectivity.

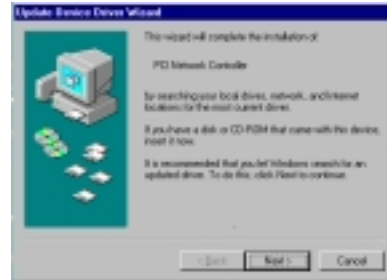
- You must now set the ADSL Configuration. **Go to page 15.**

Windows 95B

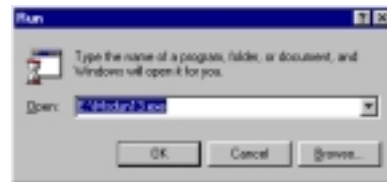
NOTE: After installing the ADSL modem card, plug the power cable back into the PC system and turn the power on.

Before you proceed to install the driver you may need to upgrade your Dial-Up Networking (DUN) application to version 1.3 or above. The Microsoft DUN is conveniently contained on your ADSL Driver CD-ROM.

1. After restart, the **Update Device Driver Wizard** will detect the ADSL modem card as a **PCI Network Controller**. At this time, **CANCEL** the **Update Device Driver Wizard** window.



2. From the **Start** menu on the toolbar, select **Run**.



3. The **Run** window appears. Click on **Browse** and locate the drive that contains your ADSL driver CD-ROM. Then locate and select the **MSDUN13.EXE** file. The **MSDUN13.EXE** appears in the **Open** box. Click **OK**.

4. The **Microsoft Dial-Up Networking 1.3** window appears with the message **This will install Microsoft Dial-Up Networking 1.3 for Windows 95. Do you wish to continue?** Click **Yes**.



5. An **End-User License Agreement** will appear. To accept, click **Yes**.



6. Again back in the **Microsoft Dial-Up Networking 1.3** window, you will be asked **Do you want to restart your computer now?** Click **Yes**.



NOTE: You may need the Microsoft Windows Operating System installation files (CAB files) to complete the installation. The CAB files are contained in the Microsoft's system CD-ROM. Some systems may have already installed the CAB files to the hard drive, but you should have the Windows 95 CD-ROM handy just in case.

- The **Update Device Driver Wizard** will again detect the ADSL modem card as a **PCI Network Controller**, click **Next**.

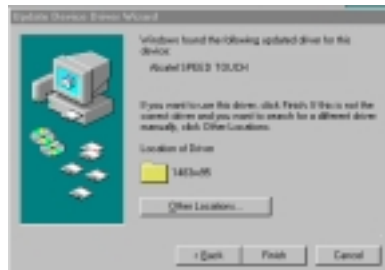
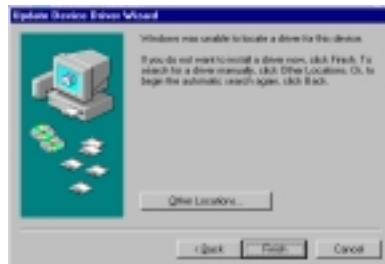
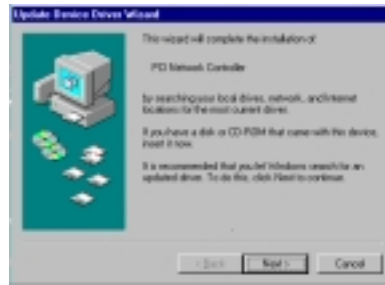
Insert the ADSL Driver CD-ROM into your system's CD drive now.

- The **Update Device Driver Wizard** will appear and indicate that **Windows was unable to locate a driver for this device**. Click **Other Locations**.

- The **Select Other Location** window appears. Click **Browse** to locate the driver on your CD-ROM for the protocol supported by your ADSL provider: **1483w95, 1577w95 or 2364w95** (The example uses "E" as the CD-ROM drive letter. Your drive may have a different letter.) Then click **OK**.

- The **Update Device Driver Wizard** will then find the **Alcatel Speed Touch**. Click **Finish**.

NOTE: During the installation process you may be asked to insert your Windows 95 CD-ROM. Insert the CD-ROM into the drive. Click **OK**.



Windows 98, 98SE

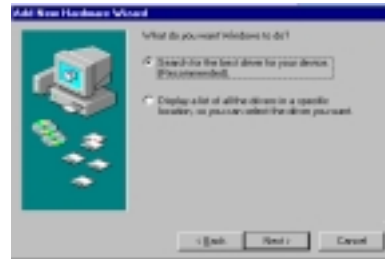
NOTE: After installing the ADSL modem card, plug the power cable back into the PC system and turn the power on.

1. The **Add New Hardware Wizard** window will automatically appear to indicate that a new **PCI Network Controller** has been found. Click **Next**.

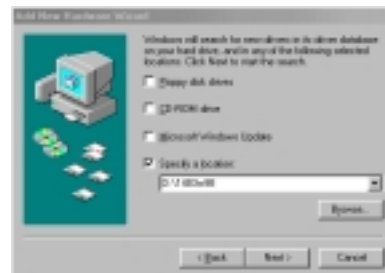
Insert the ADSL Driver CD-ROM into your system's CD-ROM drive now.



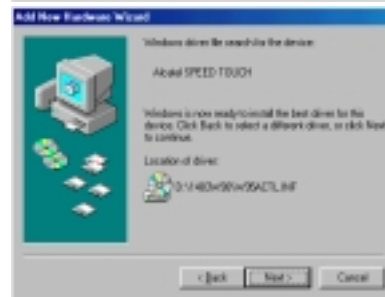
2. Still in the **Add New Hardware Wizard**, you will be asked **What do you want Windows to do?** Select the **Search for the best driver for your device** option, then click **Next**.



3. Select **Specify a location** and click **Browse** to locate the driver on your ADSL driver CD-ROM for the protocol supported by your ADSL provider: **1483w98**, **1577w98** or **2364w98**. Click **Next**.



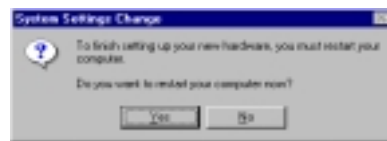
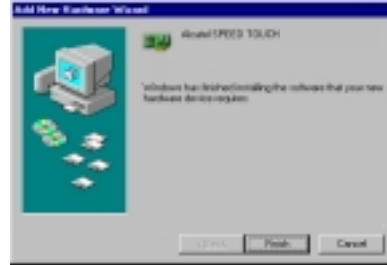
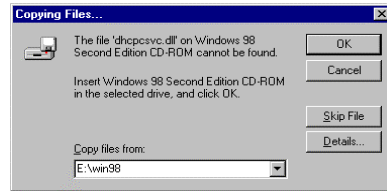
4. The **Add New Hardware Wizard** will appear and indicate the **Alcatel Speed Touch** has been recognized and will install a new driver. Click **Next**.



5. If prompted to insert your Windows 98 CD, do so at this time, then click **OK**.
6. Enter the CD drive letter (the example uses "E" as the CD-ROM drive letter, your drive letter may differ), then **:Win98** (Ex: **E:\Win98**) and click **OK**.
7. At the conclusion of the ADSL modem driver installation, the **Add New Hardware Wizard** window appears again and displays your newly installed **Alcatel Speed Touch** software. Click **Finish**
8. The **System Settings Change** window appears. For the PC system to set up the **Alcatel Speed Touch** driver, a system **Restart** is required. Click **Yes**.

NOTE: After restarting the system, the **Diagnostic Tool** icon (See Appendix) is active and monitoring connectivity.

9. You must now set the ADSL configuration. **Go to page 15.**

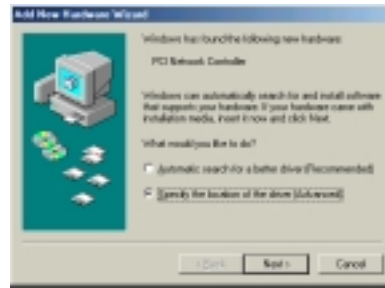


Windows Millennium

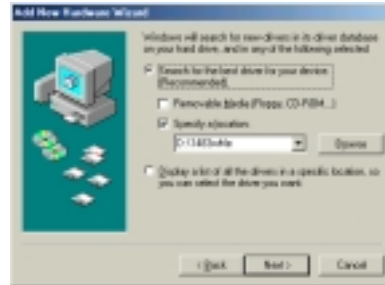
NOTE: After installing the ADSL modem card, plug the power cable back into the PC system and turn the power on.

1. The **Add New Hardware Wizard** window will automatically appear to indicate that a new **PCI Network Controller** has been found. Select the **Specify the location of the driver** option. Click **Next**.

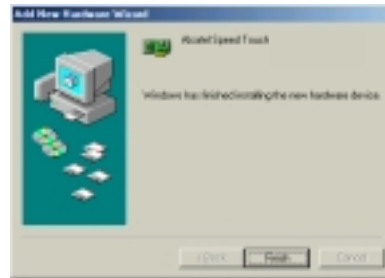
Insert the ADSL Driver CD-ROM into your system's CD-ROM drive now.



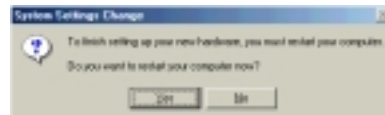
2. Still in the **Add New Hardware Wizard**, click the **Browse** button to locate the driver on your ADSL driver CD-ROM for the protocol supported by your ADSL provider: **1483wMe, 1577wMe or 2364wMe**. (The example uses “D” as the CD-ROM drive letter. Drive letters may vary.) Then click **Next**.



3. The **Add New Hardware Wizard** window now displays your newly installed **Alcatel Speed Touch**. Click **Next**.
4. The **Add New Hardware Wizard** has now finished installing the new hardware device. Click **Finish**.



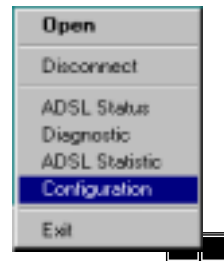
5. The **System Settings Change** window appears. Click **Yes** to restart your PC system to allow the new changes to take effect.



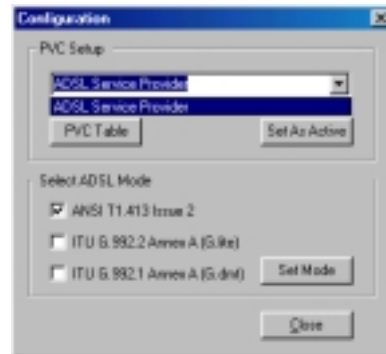
6. You must now set the ADSL configuration. **Go to page 15.**

Setting the ADSL Configuration - Win95, Win98, WinMe

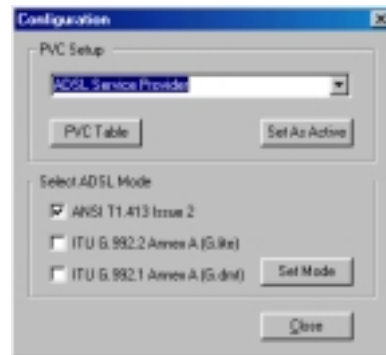
1. After your PC has rebooted, right-click on the **Diagnostic Tool Icon** (see Appendix), and select the **Configuration** option.



2. When the Configuration window appears, scroll through the **PVC setup** section to locate the service you will be connecting to. Then click **Set As Active**.

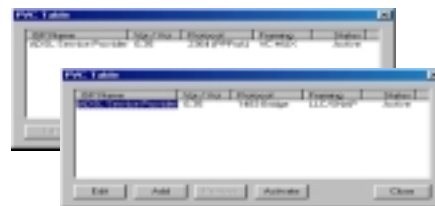


3. In the **Select ADSL Mode** section, select the mode(s) recommended by your ADSL service provider. Then click **Set Mode**.

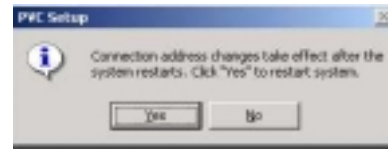


4. When you have set both the **PVC Setup** and **ADSL Mode**, click **Close**.

NOTE: To modify, add, or remove ISP settings from the **Configuration** window in the **PVC Setup** section, click on the **PVC Table** button. The **PVC Table** window then appears for the Protocol you are using.



5. The **PVC Setup** window appears. Click **Yes** to restart your PC system and to allow the new changes to take effect.



6. You must now make an ADSL connection, proceed to the section for the protocol you are using as follows:

RFC1483 and RFC1577
RFC2364

Go to page 17.
Go to page 20.

Making an ADSL connection

RFC1483 or RFC1577 - Win95, Win98, WinMe

1. From the **Start** menu on the tool bar, select **Settings, Control Panel**, and then **double-click** on the **Network** icon.
2. The **Network** window appears. Select the component window and verify that **Alcatel Speed Touch** is present.
3. Scroll the installed network component window and select **TCP/IP → Alcatel Speed Touch**. Then click the **Properties** button.



- The **TCP/IP Properties** window will appear. Select the **IP Address** tab and then select the **Specify an IP Address** option. Enter the **IP Address** and **Subnet Mask** settings supplied by your ADSL provider.

NOTE: If your Internet Service Provider uses a **DHCP** connection, select the **Obtain an IP address automatically** option. Click **OK** and your ADSL service connection will be established. Proceed to step 12 on the following page.



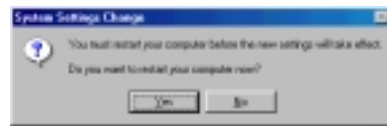
- To setup a new gateway, select the **Gateway** tab, and then enter the setting in the **New Gateway** section. Click **Add**.



6. Select the **DNS Configuration** tab then click **Enable DNS** option.
NOTE: You now need to have available the **Host, Domain** and **DNS** settings supplied by your ADSL service provider.
7. Enter your host name into **Host:** box.
8. Enter your domain name into **Domain:** box.
9. Enter **DNS** number into **DNS Server Search Order** box and click **Add**. If you have more than one **DNS** number, repeat this step.
10. After setting all the necessary TCP/IP properties, click **OK**.
11. The **Network** window appears (not shown). Click **OK**.



12. The **System Setting Change** window appears. You will be asked if you want to restart your computer. Click **Yes**.



Congratulations, you are done. Your ADSL Internet connection is established!

Making an ADSL Connection

RFC2364 – Win95, Win98, WinMe

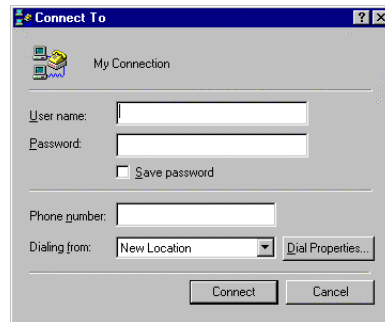
1. After your PC restarts, the **Location Information** window may appear. If it does, then enter your area code and other information as appropriate.



2. Double-click on the **ADSL Connect** icon that appears on your desktop.



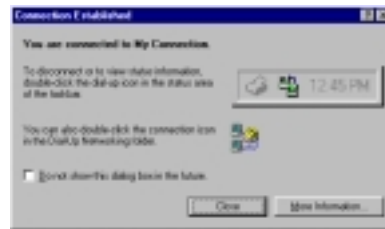
3. The **Connect To** window appears. Enter the **User Name** and **Password** supplied by your Internet service provider (ISP). Then click **Connect**.



4. The **Connecting to My Connection** window appears. The message **Status: Logging on to network...** confirms a valid connecting process.



5. The **Connection Established** window appears. Internet service is now established. Click **Close** and then the Diagnostic tool icon will appear on the task bar.



Congratulations, you are done. Your ADSL connection is established!

Windows NT4.0 - RFC1483 or RFC1577

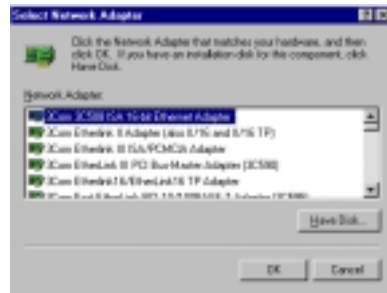
NOTE: After installing the ADSL modem card, plug the power cable back into the PC system and turn the power on.

1. **Right-Click** on the **Network Neighborhood** icon, and select **Properties**.
2. The Network window appears. Select the **Adapters** tab and then click **Add**.

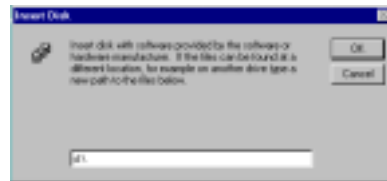
Insert ADSL Driver CD-ROM into your system's CD drive now.



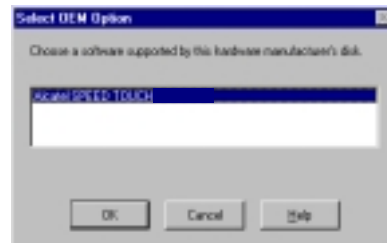
3. The **Select Network Adapter** window appears. Click **Have Disk**.



4. The **Insert Disk** window appears. In the driver folder location, type in the drive letter and protocol folder name supported by your ADSL provider: **Ex. d:\1483wNT or d:\1577wNT**. (The example uses "d" as the CD-ROM drive letter. Your drive may have a different letter.) Click **OK**.

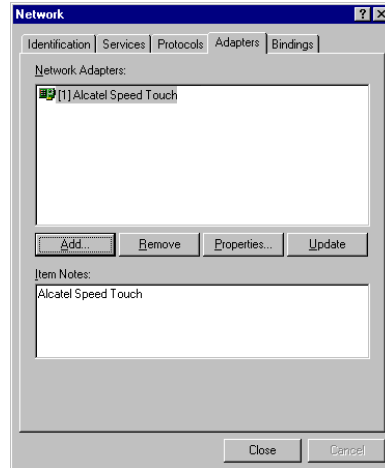


5. The **Select OEM Option** window will find **Alcatel Speed Touch**. Click **OK**.



6. The **Network** window will appear. Click the **Adapters** tab to verify that **Alcatel Speed Touch** has been found. Click on the **Protocols** tab and verify that **ADSL Management and Monitor Interface** is present. When you have verified these items, click **Close**.

NOTE: To review the Network window properties at any time, right-click the **Network Neighborhood** icon and select **Properties**.

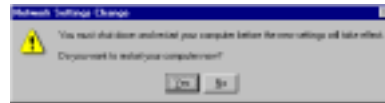


7. The **Microsoft TCP/IP Properties** window appears. Select **Specify an IP address**. Enter in the **IP Address**, **Subnet Mask**, and **Default Gateway** supplied by your ADSL service provider. Click **OK**.

NOTE: If your Internet Service Provider uses a **DHCP** connection, select the **Obtain an IP address automatically** option. Click **OK**. The **Microsoft TCP/IP** window appears, click **Yes**. The **Microsoft TCP/IP Properties** window appears again. Click **Apply**, then click **OK** and your ADSL service connection will be established.



8. The **Network Settings Change** window appears. You must now restart your computer for the settings to take effect. Click **Yes**.



9. You must now set the ADSL Configuration. **Go to page 26**.

Windows NT4.0 - RFC2364

NOTE: After installing the ADSL modem card, plug the power cable back into the PC system and turn the power on.

1. **Right-click** on the **Network Neighborhood** icon, and select **Properties**.
2. The Network window appears. Select the **Adapters** tab and then click **Add**.

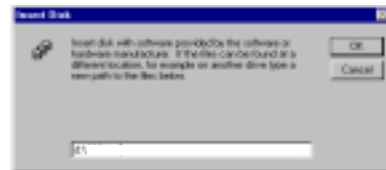
Insert the ADSL Driver CD-ROM into your system's CD drive now



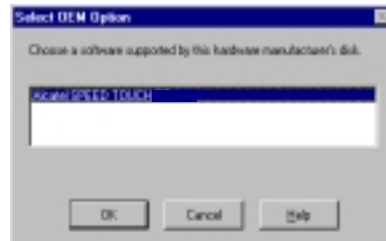
3. The **Select Network Adapter** window appears. Click **Have Disk**.



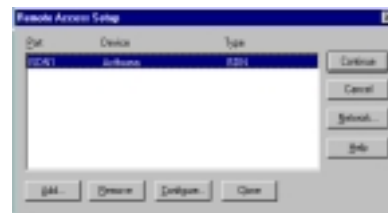
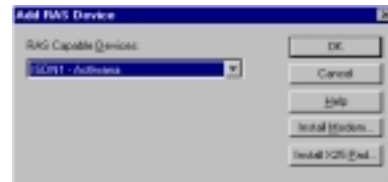
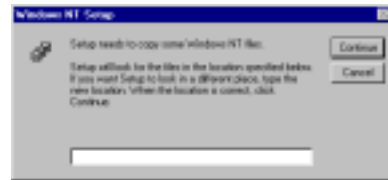
4. The **Insert Disk** window appears. In the driver folder location, type in the drive letter and protocol folder name supported by your ADSL provider: **Ex. d:\2364wNT** (The example uses "d" as the CD-ROM drive letter. Your drive may have a different letter.) Click **OK**.



5. The **Select OEM Option** window will find **Alcatel Speed Touch**. Click **OK**.

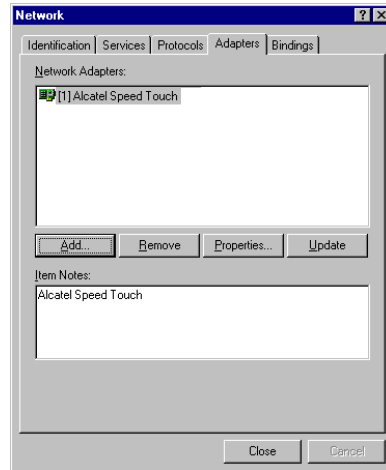


6. The **Setup Message** window appears. Click **OK**.
7. If RAS has not previously been installed on your PC, then the **Windows NT Setup** window appears. Insert your Windows NT4.0 CD-ROM into the PC system CD drive, and type in "D:\i386". Click **Continue**.
8. The **Remote Access Setup** window appears. Click **Add**.
9. The **Add RAS Device** window appears. Scroll to locate and select **ISDN1-Actiwan**. Then Click **OK**.
10. The **Remote Access Setup** window appears. Click **Continue**.

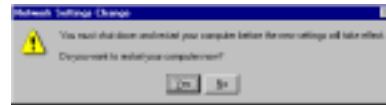


11. The **Network** window will appear. Click the **Adapters** tab to verify that **Alcatel Speed Touch** has been found. Click on the **Protocols** tab and verify that the **ADSL Management and Monitor Interface** is present. Then click **Close**.

NOTE: To review the **Network** window properties at any time, right-click the **Network Neighborhood** icon and select **Properties**.



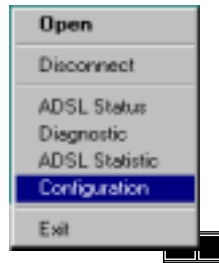
12. The **Network Settings Change** window appears. You must now re-start your computer for the settings to take effect. Click **Yes**.



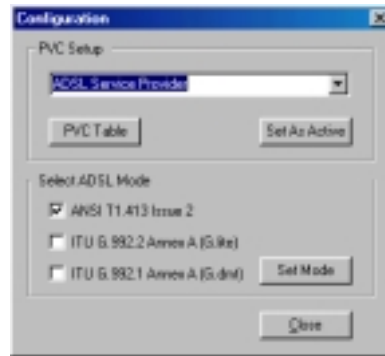
13. You must now set the ADSL configuration. **Go to page 26.**

Setting the ADSL Configuration – Windows NT4.0

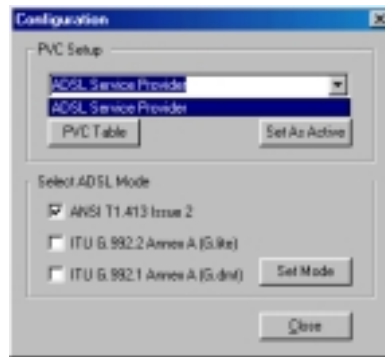
1. After your PC has rebooted, right-click on the **Diagnostic Tool** Icon (see Appendix), and select the **Configuration** option.



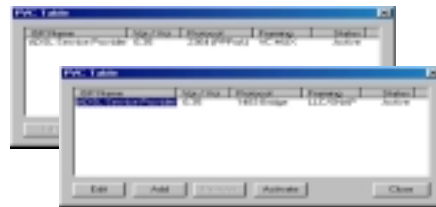
2. When the **Configuration** window appears, scroll through the **PVC setup** section to locate the service you will be connecting to. Then click **Set as Active**.



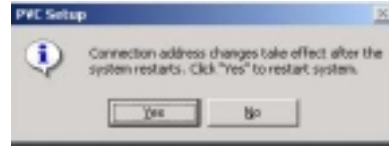
3. In the **Select ADSL Mode** section, select the mode(s) recommended by your ADSL service provider. Then click **Set Mode**.
4. When you have set both the **PVC Setup** and **ADSL Mode**, click **Close**.



NOTE: To modify, add, or remove ISP settings from the **Configuration** window, in the **PVC Setup** section, click on the **PVC Table** button. The **PVC Table** window then appears for the Protocol you are using.



5. The **PVC Setup** window appears. Click **Yes** to restart your PC system and to allow the new changes to take effect.



RFC1483 or **RFC1577**: ***Congratulations, you are done. Your ADSL connection is established!***

RFC2364: Go to page 28.

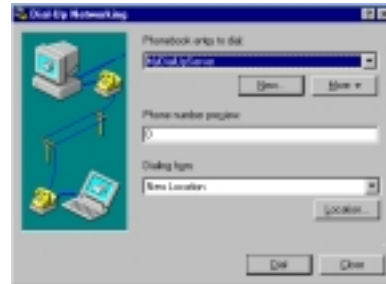
Windows NT4.0 – RFC2364

Creating a Dial-up Network Connection

1. Double-click on the **ADSL Connect** icon that appears on your desktop.



2. The **Dial-Up Networking** window appears and prompts for the phone number of the dial-up server. Unless instructed to enter a phone number by the ADSL service provider, enter zero “0”. Click Dial.



3. The **Connect to MyDialUpServer** window appears. Enter the **User name**, **Password** and **Domain** supplied by your ADSL service provider. Click **OK**.

Note: If this screen persists and a connection logon error is reported, confirm that the correct User name and Password are entered and try the connection again. Also verify that the connection address is correct.



4. The **Connection Complete** window is displayed at the completion of a successful Dial-Up logon. Choose a display behavior and click **OK** to close.



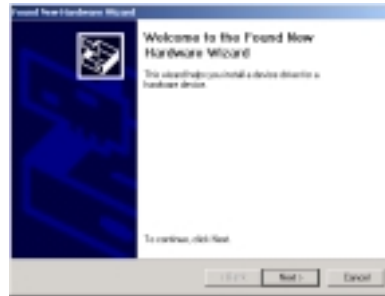
Congratulations, you are done. Your ADSL connection is established!

Windows 2000

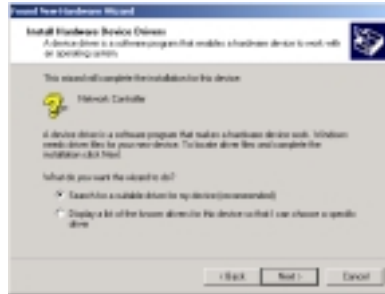
NOTE: After installing the ADSL modem card, plug the power cable back into the PC system and turn the power on.

1. After installing the ADSL modem card, power on the PC system. After start-up, the **Found New Hardware Wizard** will appear. Click **Next**.

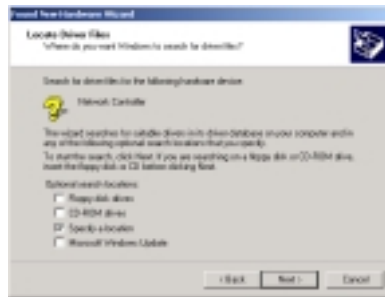
Insert the ADSL Driver CD-ROM into your system's CD drive now



2. Still in the **Found New Hardware Wizard**, select the **Search for a suitable driver for my device** option. Click **Next**.



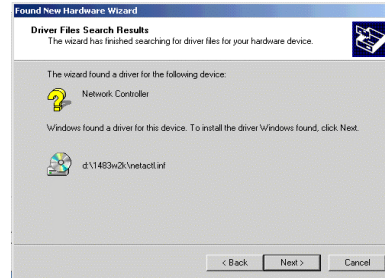
3. Next you will be prompted for software drivers. Select **Specify a location**. Click **Next**.



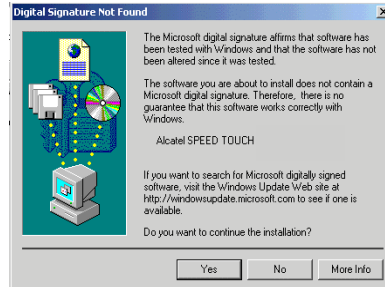
4. Click **Browse** to locate the driver on your ADSL driver CD-ROM for the protocol supported by your ADSL provider: **1483w2K**, **1577w2K** or **2364w2K**. (The example uses "D" as the CD-ROM drive letter. Your drive may have a different letter.) Click **OK**.



- The **Found New Hardware Wizard** will then display the driver you selected, click **Next**.

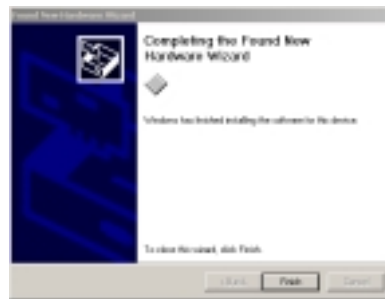


- The **Digital Signature Not Found** window appears, and shows **Alcatel Speed Touch**. You will be asked; **Do you want to continue the installation?** Click **Yes**.



- The **Found New Hardware Wizard** will prompt that **Windows has finished installing the software for this device**. Click **Finish**.

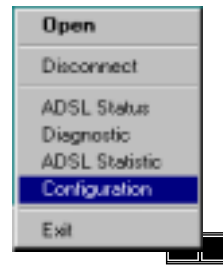
NOTE: You may be asked if you want to restart your computer, if so click **Yes**. If you are not asked, you need to restart your computer manually at this time.



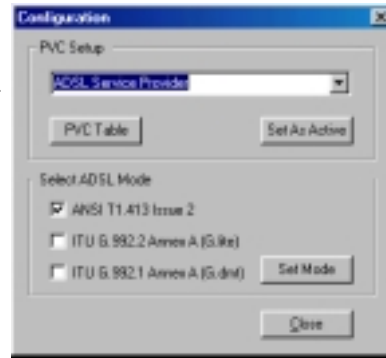
- You must now set the ADSL configuration. **Go to page 31**.

Setting the ADSL Configuration – Windows 2000

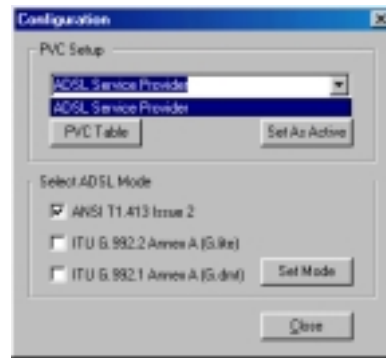
1. After your PC has rebooted, right-click on the **Diagnostic Tool Icon** (see Appendix), and select the **Configuration** option.



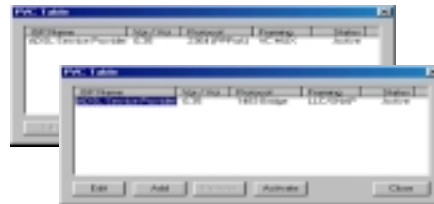
2. When the **Configuration** window appears, scroll through the **PVC setup** section to locate the service you will be connecting to. Then click **Set As Active**.



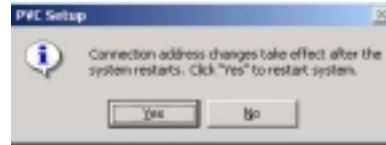
3. In the **Select ADSL Mode** section, select the mode(s) recommended by your ADSL service provider. Then click **Set Mode**.
4. When you have set both the **PVC Setup** and **ADSL Mode**, click **Close**.



NOTE: To modify, add, or remove ISP settings from the **Configuration** window in the **PVC Setup** section, click on the **PVC Table** button. The **PVC Table** window then appears for the Protocol you are using.



5. The **PVC Setup** window appears. Click **Yes** to restart your PC system and to allow the new changes to take effect.



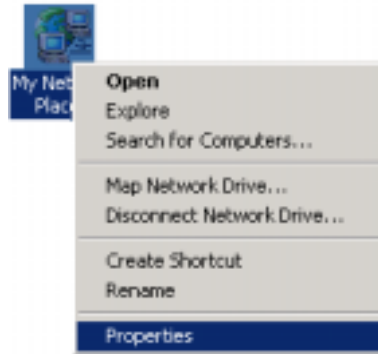
6. You must now make an ADSL connection, proceed to the section for the protocol you are using as follows:

RFC1483 or RFC1577 **Go to page 33.**
RFC2364 **Go to page 35.**

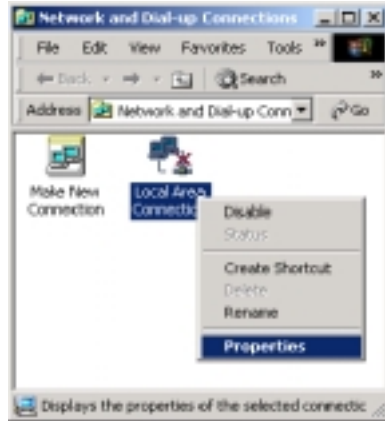
Making an ADSL Connection

RFC1483 or RFC1577- Windows 2000

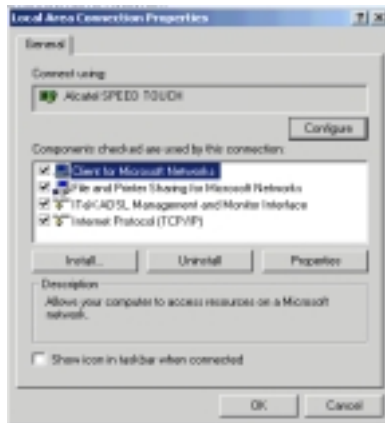
1. Right – click **My Network Places** and select **Properties**.



2. The **Network and Dial-up Connections** window appears. Right-click on the **Local Area Connection**, and then click on **Properties**.



3. The **Local Area Connection Properties** window appears. Click on **Internet Protocol (TCP/IP)**, and then click **Properties**.

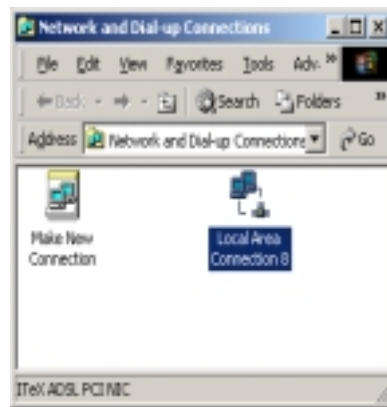
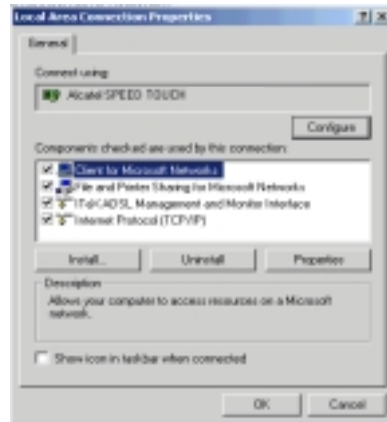


- The **Internet Protocol (TCP/IP) Properties** window appears. Under the **General** tab, enable **Use the following IP address**. The default settings for IP configurations will turn from **gray** to **clear**. Enter in the **IP address**, **Subnet Mask**, and **Default Gateway** supplied by your ADSL service provider. Click **OK**.

NOTE: If your Internet Service Provider uses a **DHCP** connection, select the **Obtain an IP address automatically** option. Click **OK** and your ADSL service connection will be established. If your Internet Service Provider uses a DHCP connection, there is no need to proceed any further.

- The previous **General Tab** window appears. Click **OK**.

- The **Network and Dial-up Connections** window appears. Close this window and your connection is complete.



Congratulations, you are done. Your ADSL Internet connection is established!

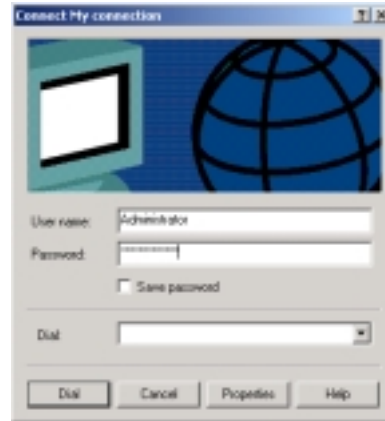
Making an ADSL Connection

RFC2364 – Windows 2000

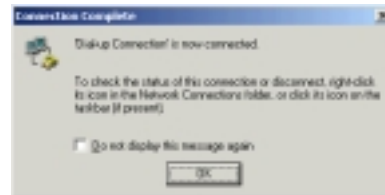
1. Double-click on the **ADSL Connect** icon that appears on your desktop.



2. The **Connect My connection** window will appear. Enter your **User Name** and **Password** supplied by your ADSL service provider. You are now ready to make a network connection. Click **Dial**.



3. The **Connection complete** window appears, click **OK**.



Congratulations, you are done. Your ADSL connection is established!

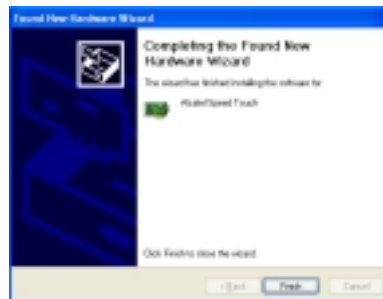
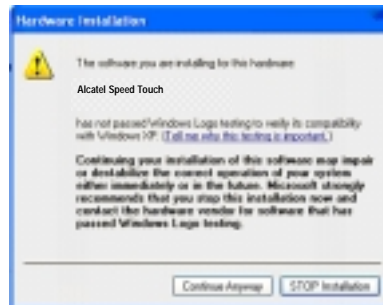
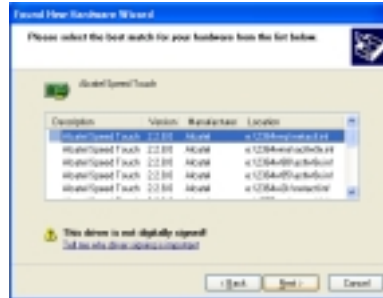
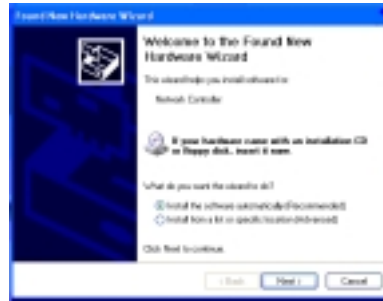
Windows XP

NOTE: After installing the ADSL modem card, plug the power cable back into the PC system and turn the power on.

NOTE: To use the Microsoft XP PPPoE client application, you must first install and configure the Alcatel 1483wXP ADSL Driver.

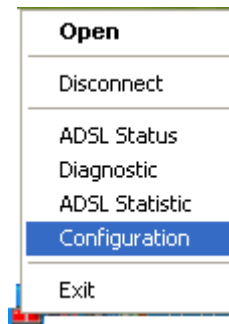
Insert the ADSL Driver CD-ROM into your system's CD drive now

1. Upon your system's reboot, the **Found New Hardware Wizard** appears. Click **Next**.
2. Select the correct protocol for Windows XP, given to you by your ADSL service provider. Click **Next**.
3. The **Digital Signature Not Found** window appears and shows **Alcatel Speed Touch**. Click "**Continue Anyway**".
4. **Completing the Found New Hardware Wizard** window appears. Click **Next** to complete the installation of your **Alcatel Speed Touch** Modem.
5. You must now set the ADSL configuration. **Go to page 37.**

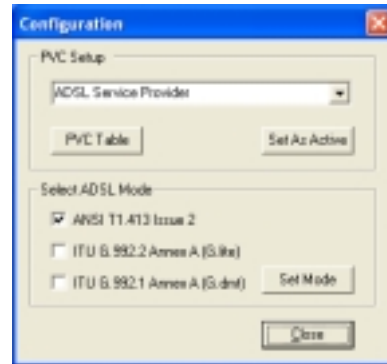


Setting the ADSL Configuration – Windows XP

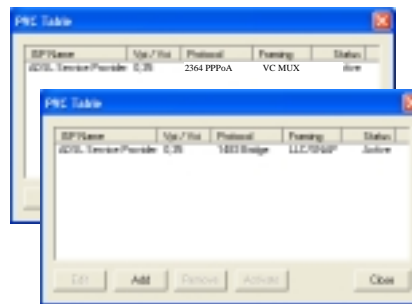
1. Right-click on the Diagnostic Tool Icon (see Appendix), and select **Configuration**.



2. When the **Configuration** window appears, scroll through the **PVC setup** section to locate the service you will be connecting to. Then click **Set As Active**.
3. In the **Select ADSL Mode** section, select the mode(s) recommended by your ADSL service provider. Then click **Set Mode**.
4. When you have set both the **PVC Setup** and **ADSL Mode**, click **Close**.



NOTE: To modify, add, or remove ISP settings from the **Configuration** window in the **PVC Setup** section, click on the **PVC Table** button. The **PVC Table** window then appears for the Protocol you are using.



5. You must now make an ADSL connection, proceed to the section for the protocol you are using as follows:

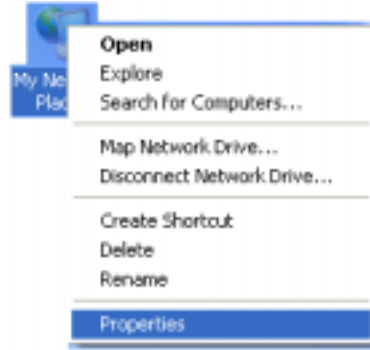
RFC1483 or RFC1577
RFC2364
Microsoft PPPoE Application

Go to page 38.
Go to page 40.
Go to page 41.

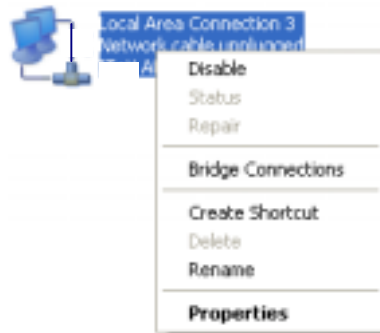
Making an ADSL Connection

RFC1483 or RFC1577 – Windows XP

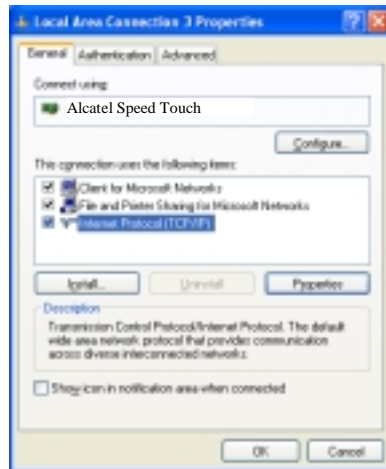
1. Right – click on **My Network Places** and select **Properties**.



2. Right – click the **Local Area Connection** that contains the **Alcatel Speed Touch**. Select **Properties**.



3. The **Local Area Connections Properties** window appears. Click **Internet Protocol (TCP/IP)**. Click **Properties**.



4. Select “Use the following IP address:”
Enter the **IP Address, Subnet mask, and Default gateway** given to you by your ADSL service provider.

NOTE: If your Internet Service Provider uses a **DHCP** connection, select the **Obtain an IP address automatically** option. Click **OK** and your ADSL service connection will be established. If your Internet Service Provider uses a DHCP connection, there is no need to proceed any further.

5. After you have entered the information, click **OK** and **Close** any remaining connection windows.



Congratulations, you are done. Your ADSL connection is established!

Making a Connection

RFC2364 – Windows XP

1. Double – click the ADSL connection icon that appears on the desktop.



2. Enter the **User name**, **Password**, and **Dial-up** number given to you by your ADSL service provider. Click **Dial**.

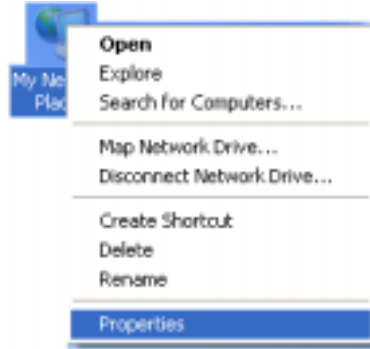


Congratulations, you are done. Your ADSL connection is established!

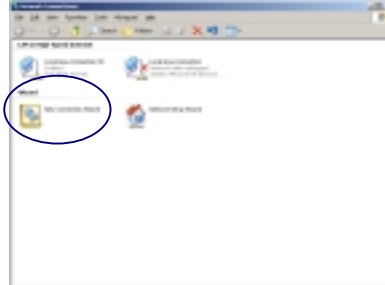
Microsoft PPPoE Application – Windows XP

NOTE: The Microsoft Windows XP PPPoE application will work only after installing and configuring the Alcatel 1483wXP Driver.

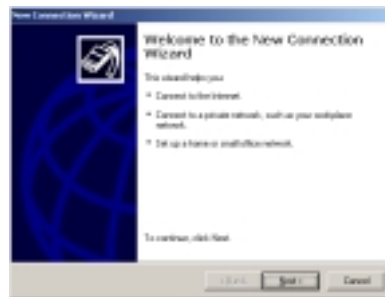
1. Right – click on **My Network Places** and select **Properties**.



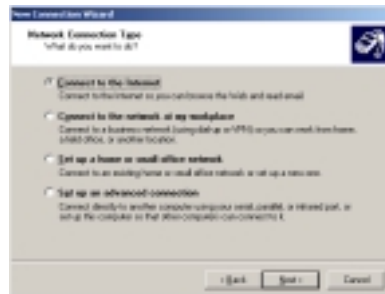
2. Double – click **New Connection Wizard**.



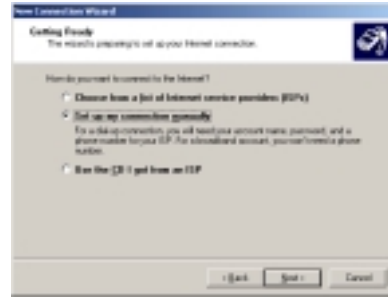
3. The **New Connection Wizard** window appears. Click **Next**.



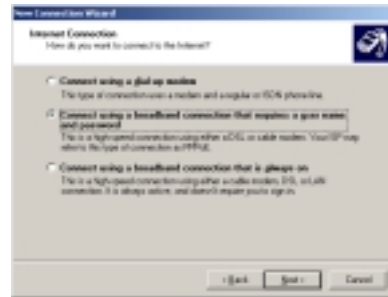
4. The **Network Connection Type** window appears. Select **Connect to the Internet**, and click **Next**.



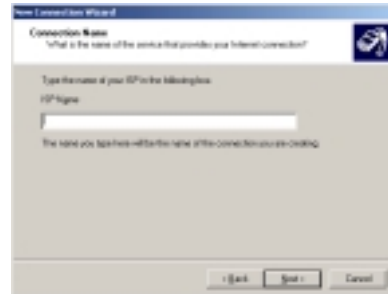
5. The **Getting Ready** window appears. Select **Set up my connection manually**. Click **Next**.



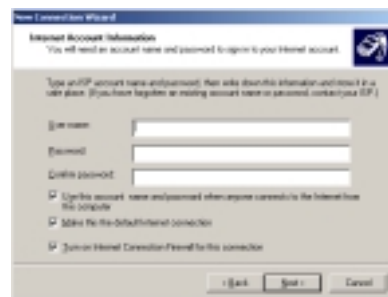
6. The **Internet Connection** window appears. Select **Connect using a broadband connection that requires a user name and password**. Click **Next**.



7. The **Connection Name** window appears. In the empty field, enter the **ISP Name** given to you by your ADSL service provider. Click **Next**.



8. The **Internet Account Information** window appears. Enter the **User name**, **Password** and **Confirm password** given to you by your ADSL service provider, in the appropriate fields. Click **Next**.



9. The **Completing the New Connection Wizard** window appears. Select **Add a shortcut to this connection to my desktop**. Click **Finish**.



10. The connection window appears. Enter the **User name** and **Password** given to you by your ADSL service provider. Click **Connect**.



Congratulations, you are done. Your ADSL connection is established!

NOTE: When it becomes necessary to reconnect, double – click the shortcut icon that appears on your desktop. It may be necessary to re-enter your **User name** and **Password** in the connect window.

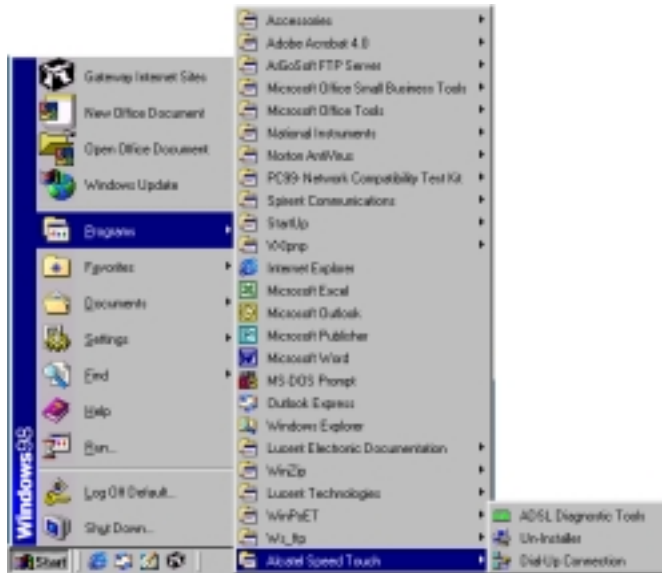


Standard ADSL Utility

Win 98, Win Me, Win NT 4.0, Win 2000

To access the ADSL Utility window:

1. Click on the **Start** menu and select **Programs**.
2. Select the **Alcatel Speed Touch** option.
3. Two options appear if you have installed **RFC1483** or **RFC1577: ADSL Diagnostic Tools** and **Un-Installer**. Three options appear if you have installed **RFC2364: ADSL Diagnostic Tools**, **Un-Installer**, and **Dial-Up Connection**.



ADSL Diagnostic Tools – If you have deleted the **Diagnostic Tools** icon from the system tray, this option launches the **Diagnostic Tools** utility icon back into the system tray. For the correct instructions on how to operate the **Diagnostic Tools**, see the **Diagnostic Tools** section.

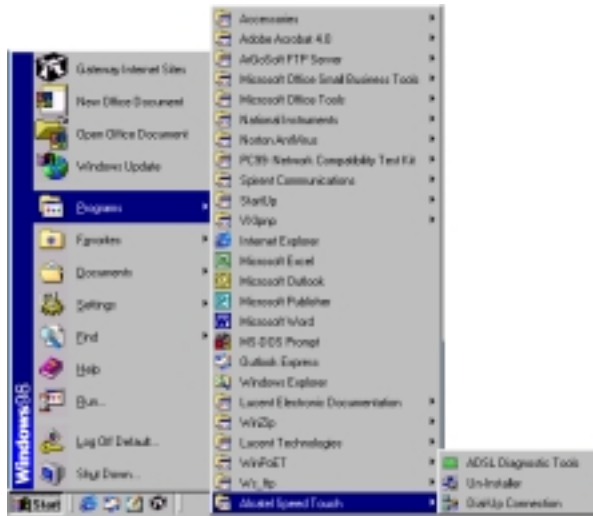
Un-Installer – This option un-installs the modem from your PC. For the correct instructions on how to use this utility, see the **Standard Un-Installer** section.

Dial-Up Connection (RFC2364 only) – This option launches the PPPoA dial-up application.

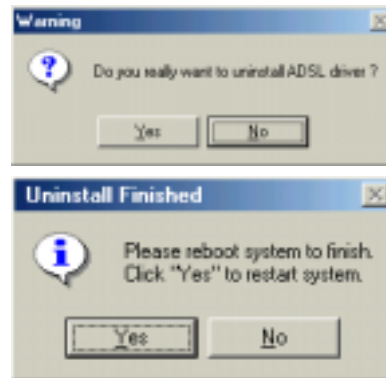
Standard Un-Installer

Win 98, Win Me, Win NT 4.0, Win 2000

1. On the desktop, click the **START** Menu on the **Task Bar**.
2. Select **Programs**. The programs window appears.
3. Select the **Alcatel Speed Touch** tab, and then click on the **Un-Installer** Tab.



4. A **Warning** window appears. Click **Yes** to proceed.
5. The **Uninstall Finished** window appears. Click **Yes** to restart your computer and allow the changes to take effect (in Windows 2000, a manual reboot may be necessary).

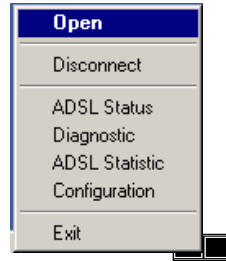


Standard Diagnostic Tools

Win 98, Win Me, Win NT 4.0, Win 2000

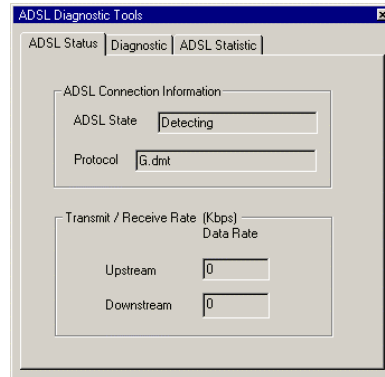
The **Diagnostic Tool** icon allows the user to monitor the DSL connectivity and run diagnostic tests. The **Diagnostic Tool** icon is displayed on the task bar as shown.

1. Right - click the ADSL modem diagnostic tool icon in the system tray, and then select **Open**.

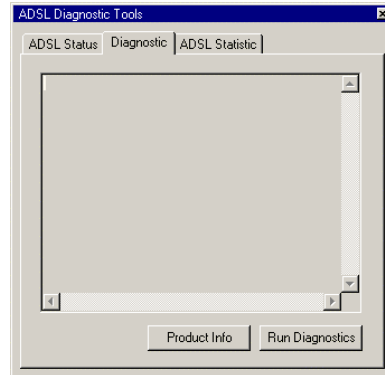


The **ADSL Diagnostic Tool** window appears on your desktop. The three tabs of the Diagnostic Tool appear: **ADSL Status**, **Diagnostic**, and **ADSL Statistics**.

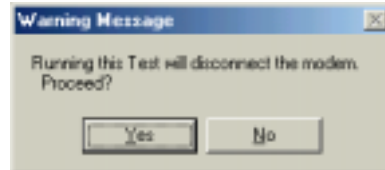
The **ADSL Status** tab displays the current status of the ADSL connection including the current ADSL State, ADSL Protocol in use, and the Transmit/Receive Rate for upstream and downstream data.



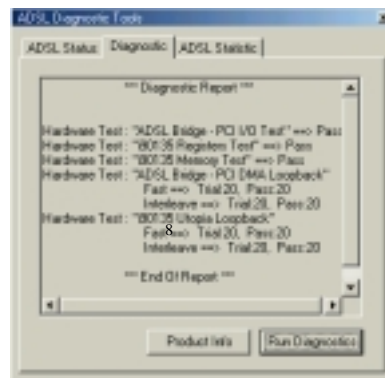
2. To run diagnostics, click on the **Diagnostic** tab. The blank **Diagnostic** window appears.
3. Click **Run Diagnostics** to begin the diagnostic test.



4. A **Warning Message** appears. Click **Yes** to run the test and disconnect your modem. Click **No** if you do not wish to disconnect or run the test.

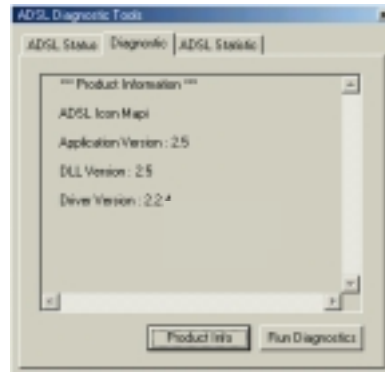


5. The **Diagnostic Report** appears with the test results.



6. You may obtain driver information as well by clicking the **Product Info** tab.

NOTE: To reconnect your modem, right - click the **Diagnostic Tool** icon in the system tray and select **Connect**.



7. The **ADSL Statistic** tab provides you with detailed information on your DSL modem connection.

Re-training Count tracks the number of ADSL connections performed.

FEC Count tracks the Forward Error Correction and indicates that errors were detected and corrected in the codeword.

CRC Count tracks mismatches with the Cyclic Redundancy Check. CRC indicates that non-correctable channel errors may have occurred.

ATM HEC Count (Header Error Control) tracks mismatches in the header of ATM packets.

The **ATM Receive Side** and **ATM Transmission Side Statistics** (Packet Errors) are counted as a measure of packet transfer performance.



XP Utility

To access the ADSL Utility window:

1. Click on the **Start** menu and select **All Programs**.
2. Select the **Alcatel Speed Touch** option.
3. Two options appear if you have installed **RFC1483** or **RFC1577: ADSL Diagnostic Tools** and **Un-Installer**. Three options appear if you have installed **RFC2364: ADSL Diagnostic Tools, Dial-Up Connection, and Un-Installer**



ADSL Diagnostic Tools – If you have deleted the Diagnostic Tools icon in the system tray, this option launches the Diagnostic Tools utility icon back into the system tray. For the correct instructions on how to operate the Diagnostic Tools, see the **XP Diagnostic Tools** section.

Dial-Up Connection (RFC2364 only) – This option launches the Dial-up connection application.

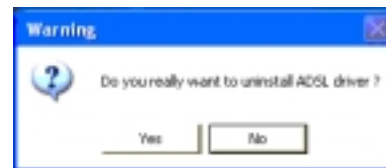
Un-Installer - This option un-installs the modem from your PC. For the correct instructions on how to use this utility, see the **XP Un-Installer** section.

XP Un-Installer

1. On the desktop, click the **START** Menu on the **Task Bar**.
2. Select **All Programs**. The programs window appears.
3. Select the **Alcatel Speed Touch** tab, and then click on the **Un-Installer** Tab.



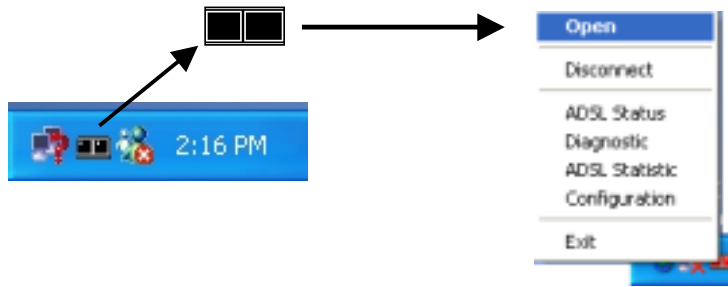
4. A **Warning** message may appear. Click **Yes** to un-install your modem and allow the changes to take effect.



XP Diagnostic Tools

The **Diagnostic Tool** icon allows the user to monitor the DSL connectivity and run diagnostic tests. The **Diagnostic Tool** icon is displayed in the system tray, as shown.

1. **Right** - click the ADSL modem diagnostic tool icon, and then select **Open**.

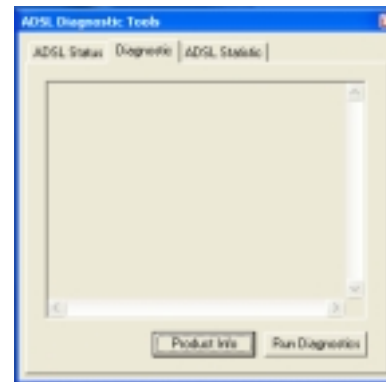


The **ADSL Diagnostic Tool** window appears on your desktop. The three tabs of the Diagnostic Tool appear: **ADSL Status**, **Diagnostic**, and **ADSL Statistics**.

The **ADSL Status** tab displays the current status of the ADSL connection, including the current ADSL State, ADSL Protocol in use, and the Transmit/Receive Rate for upstream and downstream data.



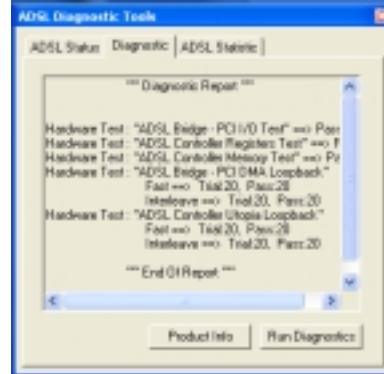
2. To run diagnostics, click on the **Diagnostic** tab. The blank **Diagnostic** window appears.
3. Click **Run Diagnostics** to begin the diagnostic test.



4. A **Warning Message** appears. Click **Yes** to run the test and disconnect your modem. Click **No** if you do not wish to disconnect or run the test.

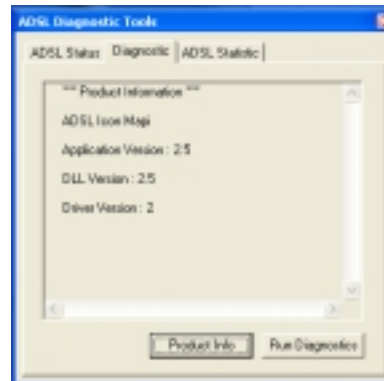


5. The **Diagnostic Report** appears with the test results.



6. You may obtain driver information as well by clicking the **Product Info** tab.

NOTE: To reconnect your modem, [right click](#) the **Diagnostic Tool** icon on the task bar and select **Connect**.



7. The **ADSL Statistic** tab provides you with detailed information on your DSL modem connection.

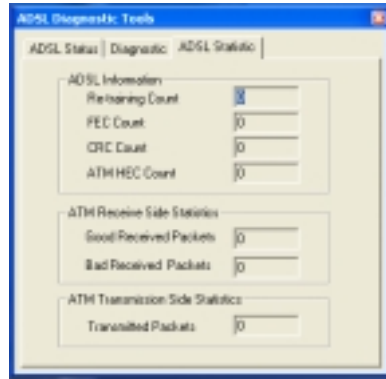
Re-training Count tracks the number of ADSL connections performed.

FEC Count tracks the Forward Error Correction and indicates that errors were detected and corrected in the codeword.

CRC Count tracks mismatches with the Cyclic Redundancy Check. CRC indicates that non-correctable channel errors may have occurred.

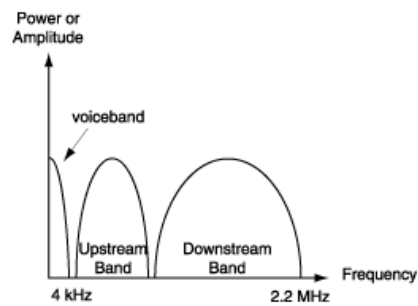
ATM HEC Count (Header Error Control) tracks mismatches in the header of ATM packets.

The **ATM Receive Side** and **ATM Transmission Side Statistics** (Packet Errors) are counted as a measure of packet transfer performance.



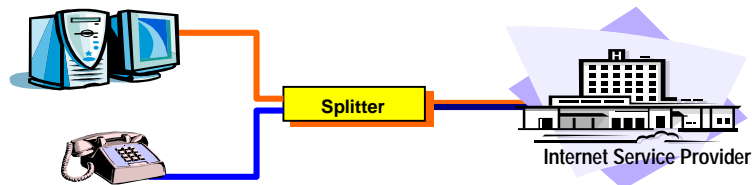
ADSL Connection Guide

The A in ADSL stands for Asymmetric. Since most home users tend to be more of a consumer of data than a producer, a slower upstream (upload) speed can be traded off for a faster downstream (download) speed. ADSL is designed to run on your standard telephone lines or POTS (Plain Old Telephone System) because the voice band runs on the low end of the frequency spectrum. The ADSL signal runs on the high end of the frequency spectrum. ADSL therefore needs a splitter to be installed to separate the two signals.

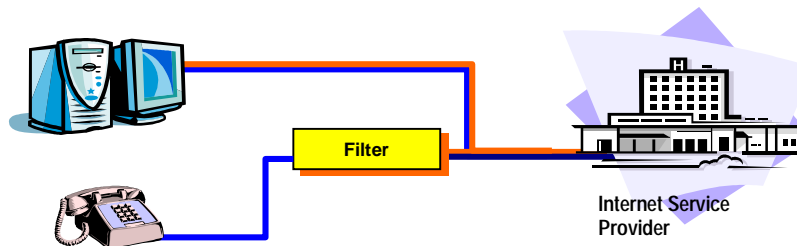


Line Splitter: A splitter is a small device that captures the first 4 kHz of frequency and splits them off for phone use. The rest of the data is passed onto the ADSL equipment. The splitter is the first device an ADSL line meets when it arrives at the user's premises. Splitters are usually employed when ADSL lines are used on existing voice telephone lines.

This diagram is of a basic ADSL in a home. The splitter depicted here is a small box that strips off the phone signal from the ADSL Service Provider line and leaves the data (indicated by the orange line) to be routed to the ADSL equipment.



Line Filter: A separate filter may be required if an ADSL setup does not use splitters. The filter is to protect the ADSL signal from being contaminated by high frequency noise added by analog phone devices, answering machines, faxes and so on. An ADSL setup, with a filter instead of a splitter, allows the data and voice signal to flow through the house phone wires, but filters out any high frequency noise from the telephone or fax machines.












TIP: Radio frequency interference, such as a television or a cordless telephone may effect you ADSL connection. If you have such a device close to the telephone line of your computer, you should move the device.










NOTE: ADSL service may introduce audible interference on some phone equipment.

Common Problems and Solutions

The Diagnostic Tool icon consists of two lights side by side. The left light indicates data is being transmitted whereas the right light indicates data is being received. Some common problems with the connection can be determined as follows:

Color Code	Description
 Red, Red	No ADSL connection or handshaking. Check your cable.
 Black, Yellow	Handshaking (flashing yellow alternating position).
 Black, Black	No data traffic or idle connection.
 Black, Green	Modem card is receiving data (TX/off, RX/on).
 Green, Black	Modem card is transmitting data (TX/on, RX/off).
 Green, Green	Modem card is transmitting and receiving data. (TX/on, RX/on).
	Driver installation problem exists, or the driver is in "Disconnect" mode.

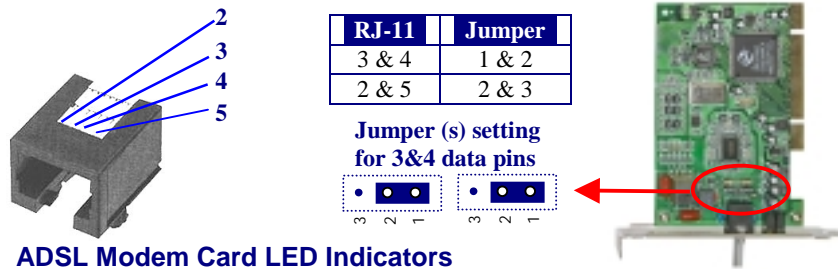
Problem	Solution
<p>The ADSL modem diagnostic icon is not on the taskbar.</p> 	<p>Restart the computer:</p> <ol style="list-style-type: none"> 1. Save and close any open files and exit any open programs. 2. Click the Start button, and then click Shut Down. 3. In the Shut Down Windows window, click Restart and then click OK. <p>If the ADSL modem diagnostic icon does not appear after you restart the computer, uninstall and reinstall the driver.</p>
<p>There are 2 ADSL modem diagnostic icons on the taskbar.</p> 	<p>You may have inadvertently installed the driver twice without performing the Un-Installer procedure. Contact your ADSL Internet service provider before you uninstall any ADSL modem driver to ensure that you uninstall the appropriate driver.</p>
<p>The ADSL modem diagnostic icon lights are flashing black and yellow:</p> 	<p>The ADSL modem is trying to connect to the Internet. If the modem fails to connect, ensure that the modem is connected to the telephone wall jack.</p> <p>You may have inadvertently or incorrectly installed a filter or line conditioner on the telephone cord that connects the modem to the telephone wall jack.</p> <p>Your ADSL service may be temporarily down. Contact your ADSL Internet service provider.</p>

<p>Both ADSL modem diagnostic icon lights are red.</p> 	<p>Ensure that the modem is connected to the telephone line, and that your telephone line is connected to the wall jack. Verify that the ADSL Modes selected are ANSI and G.dmt. Your ADSL service may be temporarily down. Contact your ADSL Internet service provider. Right-click the modem diagnostic icon and then click Diagnostic to run the modem diagnostics. If all tests pass, the digital circuit is functioning properly, but the analog circuit may be defective. Contact your ADSL Internet service provider. If any of the tests fail, the digital circuit is defective. Contact your ADSL Internet service provider.</p>
<p>You cannot connect to the Internet.</p> 	<p>There may be a driver installation problem: Contact your ADSL service provider for further assistance. PPPoE installation may have an anomaly. The service may be configured for Static IP. You may need to verify that the TCP/IP Entries, gateway, and DNS are correct, or reboot the system and make a new connection.</p>
<p>You can connect to the Internet but the connection unexpectedly terminates.</p> 	<p>The telephone line that connects the ADSL modem to the telephone wall jack may be too close to a device that emits radio frequency interference, such as a television or a cordless telephone. If you have such a device close to the telephone line or your computer, try moving the device. Contact your ADSL Internet service provider.</p>
<p>You hear noise or static when you use the telephone.</p>	<p>Ensure that you have installed the wall-mount filter or a line conditioner.</p>
	<p><u>Right</u> – click on the icon and select Connect. If this is not successful, then there is a problem with the driver installation. Un-Install the drivers and reload them.</p>

Connector & Jumper-pin Configuration Guide

It is important to verify that the ADSL data port RJ-11 jack is configured so that the center two pins, pins 3 and 4, are used for ADSL data. Otherwise, the ADSL PCI modem card will not make a proper connection. Your ADSL modem card features pin jumpers that enable the user to set the configuration to make the proper connection. The modem card is default set to 3 and 4.

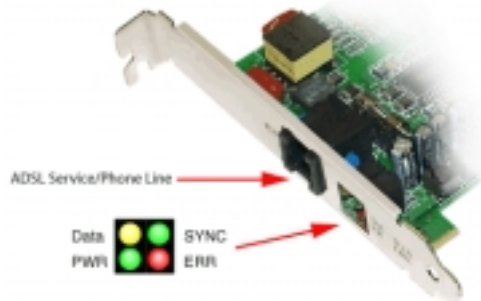
If the ADSL data port installation uses pins 2 and 5 for data, then the jumper settings on your board will need to be reconfigured. To do this, orient your board per the diagram below (the RJ-11 connector should be facing towards you) and simply lift the jumper off of the pin setting for 3 and 4, and place it onto the pin setting for 2 and 5, or visa versa.



ADSL Modem Card LED Indicators

LED	Status	Signal	Description
Green Bottom	PWR	On	Power Supply OK
Green Top	SYNC	Flashing	Modem Connecting
		On	Modem Connected
Yellow Top	DATA	On: TX or RX	ATM data transmission
		Off: no data	
Red Bottom	ERR	Flash on CRC error	ATM data transmission
All four		All On	Driver not yet installed or modem card is defective

ADSL Modem Card Bracket



System Requirements & Compliance Certification

System Requirements

- √ IBM PC/AT or compatible
- √ Pentium II 500Mhz or faster
- √ 30Mbytes or more available hard disk space
- √ 2x CD-ROM drive or better
- √ 32Mbyte or more available system memory

Power Requirements

- √ 0.75A Max @ +5V \pm 5%, 0.1A max @ \pm 12V, \pm 5%

Environmental Requirements

- √ Operating Temperature: 0 °C to 70°C with airflow
- √ Non-operating Temperature: -10 °C to 85 °C
- √ Operating Humidity: 10% to 90% non-condensing
- √ Non-operating storage humidity: 5% to 95% non-condensing

Compliance Certification

- √ UL 1950
- √ CE approved
- √ FCC Part 15 Class B

Copyright & Regulatory Information

Driver software and manual Copyright © 2002, Integrated Telecom Express, Inc.

This manual and software described in it are copyrighted with all rights reserved. This manual may not be copied, in whole or in part, without written consent. All product names are trademarks and or registered trademarks of their respective companies.

Safety Instructions

Use the following instructions to help protect yourself and your computer.

- For use in UL – listed Personal Computers
- Caution – To reduce the risk of fire, use only 26 AWG or larger telecommunication line cord.
- Disconnect telecommunication line during an electrical storm to avoid the remote risk of electric shock from lightning via the telephone line.
- To remove power from the computer, turn it off and disconnect power cable from electrical outlet.
- To help avoid the potential hazard of electrical shock, do not connect or disconnect cable or perform installation and un-installation of this product.
- Handle this product with care, holding it by the metal bracket.
- Important Safety Instructions- When using your telephone equipment, basic safety precautions should always be followed to reduce the risk of fire, electric shock and injury to persons, including the following:
 1. Do not use this product near water. For example: near a bathtub, washbowl, kitchen sink or laundry tub, in a wet basement, or near a swimming pool.
 2. Avoid using a telephone during an electrical storm. There may be a remote risk of electric shock from lightning.
 3. Do not use the telephone to report a gas leak in the vicinity of the leak.
 4. Using only the telephone line cord indicated in this manual.

FCC Statement

FCC Part 15 Notice

WARNING: This equipment has been tested and found to comply with the limits for a Class B digital device, pursuant to Part 15 of the FCC Rules. These limits are designed to provide reasonable protection against harmful interference in a residential installation. This equipment generates, uses, and can radiate radio frequency energy and, if not installed and used in accordance with the instructions, may cause harmful interference to radio communications. However, there is no guarantee that interference will not occur in a particular installation. If this equipment does cause harmful interference to radio or television reception, which can be determined by turning the equipment off and on, the user is encouraged to try to correct the interference by one or more of the following measures:

- Reorient or relocate receiving antenna.
- Increase the separation between the equipment and receiver.
- Connect the equipment into an outlet on a circuit different from that to which the receiver is connected.
- Consult the dealer or an experienced radio/TV technician for help.

This device complies with Part 15 of the FCC rules. Operation is subject to the following two conditions:

- This device may not cause harmful interference.
- This device must accept any interference received including interference that may cause undesired operation.

FCC Part 68 Notice

This equipment complies with Part 68 of the FCC rules. On the back of this equipment is a label that contains, among other information, the FCC registration number and ringer equivalence number (REN) for your equipment. If requested, you must provide this information to the telephone company.

The REN is used to determine the quantity of devices that may be connected to the telephone line. Excessive RENs on the telephone line may result in the devices not ringing in response to an incoming call. In most areas, the sum of all the RENs on your telephone line should be less than five to ensure proper service from the telephone company. To be certain of the number of devices that you may connect to a line as determined by the total RENs, contact your local telephone company.

The registration jack Universal Service Order Code (USOC) used by this equipment is RJ-11C. This equipment is designed to be connected to the telephone network or premises wiring using a compatible modular jack that is Part 68 compliant.

This equipment cannot be used on public coin-phone service provided by the telephone company. Connection to party line service is subject to state tariffs.

There are no user serviceable parts on this equipment.

If your telephone equipment causes harm to the telephone network, the telephone company will notify you in advance that service may be temporarily discontinued. If advance notice is not practical, the telephone company will notify you as soon as possible. Also, you will be advised of your right to file a complaint with the FCC if you believe it is necessary.

The telephone company may make changes in its facilities, equipment, operations, or procedures that could affect the operation of this equipment. If this happens, the telephone company will provide advance notice in order for you to make necessary modifications to maintain uninterrupted service.

- If you experience trouble with your telephone equipment, contact your ADSL Service Provider. If the equipment is causing harm to the telephone network, the telephone company may request that you disconnect the equipment until the problem is resolved.

User License Agreement

INTEGRATED TELECOM EXPRESS INCORPORATED
 USER LICENSE AGREEMENT
 FOR INTEGRATED TELECOM EXPRESS, INC. ADSL DRIVERS

NOTICE TO USER:
 THIS IS A CONTRACT. BY INSTALLING THIS SOFTWARE YOU ACCEPT ALL THE TERMS AND CONDITIONS OF THIS AGREEMENT.

This Integrated Telecom Express Incorporated ("ITeX") End User License Agreement accompanies the ITeX(tm) ADSL TESTER(tm) product and related explanatory materials ("Software"). The term "Software" also shall include any upgrades, modified versions or updates of the Software licensed to you by ITeX. Please read this Agreement carefully. Upon your acceptance of this Agreement, ITeX grants to you a nonexclusive license to use the Software, provided that you agree to the following:

1. Use of the Software.

- You may install the Software on a hard disk or other storage device and make backup copies of the Software. You may only use the Software and any backup copies with the associated ITeX product.

2. Copyright and Trademark Rights. ITeX and its suppliers own the Software. Its structure, organization and code are the valuable trade secrets of ITeX and its suppliers. United States Copyright Law and International Treaty provisions also protect the Software. You may use trademarks only insofar as required to comply with Section 1 of this Agreement and to identify printed output produced by the Software, in accordance with accepted trademark practice, including identification of trademark owner's name. Such use of any trademark does not give you any rights of ownership in that trademark. Except as stated above, this Agreement does not grant you any intellectual property rights in the Software.

3. Restrictions. You may not use the Software or any backup copies in any way other than as set forth in Section 1 above. Without limiting the generality of the foregoing restriction, you may not distribute or otherwise transfer the Software or any backup copies to any third parties. You agree not to modify, adapt, translate, reverse engineer, de-compile, disassemble or otherwise attempt to discover the source code of the Software.

4. **No Warranty. The Software is being delivered to you AS IS and ITeX makes no warranty as to its use or performance. ITeX AND ITS SUPPLIERS DO NOT AND CANNOT WARRANT THE PERFORMANCE OR RESULTS YOU MAY OBTAIN BY USING THE SOFTWARE OR DOCUMENTATION. ITeX AND ITS SUPPLIERS MAKE NO WARRANTIES, EXPRESS OR IMPLIED, AS TO NON-INFRINGEMENT OF THIRD PARTY RIGHTS, MERCHANTABILITY, OR FITNESS FOR ANY PARTICULAR PURPOSE. IN NO EVENT WILL ITeX OR ITS SUPPLIERS BE LIABLE TO YOU FOR ANY CONSEQUENTIAL, INCIDENTAL OR SPECIAL DAMAGES, INCLUDING ANY LOST PROFITS OR LOST SAVINGS, EVEN IF AN ITeX REPRESENTATIVE HAS BEEN ADVISED OF THE POSSIBILITY OF SUCH DAMAGES, OR FOR ANY CLAIM BY ANY THIRD PARTY. Some states or jurisdictions do not allow the exclusion or limitation of incidental, consequential or special damages, or the exclusion of implied warranties or limitations on how long an implied warranty may last, so the above limitations may not apply to you.**

5. Governing Law and General Provisions. This Agreement will be governed by the laws of the State of California, U.S.A., excluding the application of its conflicts of law rules. The United Nations Convention on Contracts for the International Sale of Goods, the application of which is expressly excluded, will not govern this Agreement. If any part of this Agreement is found void and unenforceable, it will not affect the validity of the balance of the Agreement, which shall remain valid and enforceable according to its terms. You agree that the Software will not be shipped, transferred or exported into any country or used in any manner prohibited by the United States Export Administration Act or any other export laws, restrictions or regulations. This Agreement shall automatically terminate upon failure by you to comply with its terms. This Agreement may only be modified in writing signed by an authorized officer of ITeX.

6. Notice to Government End Users. The Software and Documentation are "Commercial Items," as that term is defined at 48 C.F.R. §2.101, consisting of "Commercial Computer Software" and "Commercial Computer Software Documentation," as such terms are used in 48 C.F.R. §12.212 or 48 C.F.R. §227.7202, as applicable. Consistent with 48 C.F.R. §12.212 or 48 C.F.R. §§227.7202-1 through 227.7202-4, as applicable, the Commercial Computer Software and Commercial Computer Software Documentation are being licensed to U.S. Government end users (A) only as Commercial Items and (B) with only those rights as are granted to all other end users pursuant to the terms and conditions herein.

Unpublished-rights reserved under the copyright laws of the United States.
 Integrated Telecom Express, San Jose, CA 95126.

ITeX, Apollo and ADSL Tester are trademarks of Integrated Telecom Express, Inc.



Francis Wellensplein 1 • B-2018 Antwerpen
Tel. +32 3 240 40 11 • Fax +32 3 240 99 99
www.alcateldsl.com